



PRODUCT CATALOGUE
High Performance Solutions
for buildings and premises

A man and a woman, both wearing white hard hats and high-visibility yellow safety vests over dark business attire, are standing on a paved area in front of a modern building with a glass facade. They are holding and looking at a large set of blueprints. The man is on the left, and the woman is on the right. The background shows a clear sky and some greenery in the foreground.

ABOUT US

Tiki Tar Danosa India Pvt. Ltd., a joint venture of Tiki Tar Industries (India) and Danosa (Spain), under the brand name of "TIKIDAN" brings together, Tiki Tar's local expertise and market presence with Danosa's materials science, research and expertise, to the Indian construction industry.

At TIKIDAN, we use innovation and technology to deliver quality solutions to projects, in more than 60 countries in the world. With our combined expertise of more than 100 years, we provide holistic solutions starting from analysis, design, materials till application, ensuring quality and consistency for various construction needs. Our employee presence close to the project locations, our distributors and applicator network and our global footprint serves as a catalyst to manufacture and market unmatched quality construction chemical solutions.

Our range of construction chemicals and building material solutions comprise of Flooring, Waterproofing, Thermal Insulation, Acoustic Insulation, Sealants, and more. We put special emphasis on the development of new products and the design of new construction systems, both for new construction and renovation. All the developments are done after a careful evaluation of the sustainable use of resources and the environmental impact of construction works.

TIKIDAN products and systems are certified and evaluated technically by different European and Indian accreditation bodies. They are recognized, through the Harmonized European and Indian Standards and Technical Suitability Assessments, complying with the parameters of quality demands, for tranquility and safety of all type of constructive requirements.



WATERPROOFING



TIKIDAN brings to its customers, an extensive range of waterproofing products and solutions aimed at covering different technical requirements of a building. These solutions not only safeguard the structural integrity of the building, but also protects the aesthetics and performance in the long run.



BITUMINOUS WATERPROOFING

HYDROSTOP

The HYDROSTOP range of membranes are manufactured from modified bitumen with APP (Atactic - polypropylene) plastomeric polymers that gives the following properties to the membrane:

APP POLYMER MODIFIED MEMBRANE AND SBS MEMBRANE

| Property of Modified Binder | APP Membrane | SBS Membrane |
|--|--------------|--------------|
| Elastic Recovery | <20% | 90% |
| Softening Point | 150°C | 120°C |
| Property of Waterproofing Membrane Sheet | | |
| Flexibility at Low Temperature | Up to -5°C | -15°C |
| Resistance to Flow at High Temperature | >120°C | >100°C |

ADVANTAGES

- Excellent resistance at high temperature.
- High mechanical strength.
- Good flexibility conforming to geometries.
- Elastic behaviour.
- Self-healing properties.
- Excellent bonding with primed surface.
- Easy to repair in the event of accidental damage.
- High product durability.

AREAS OF APPLICATION

- Basement Floors
- Retaining Walls
- Blindside Walls
- Podium Parking
- Podium Landscape
- Planter Box
- Cut and Cover Tunnels
- Balconies
- Sloping Roof
- Metal Deck Roof
- Terraces
- Green Roof



APP MEMBRANES



| Code | Commercial name | Thickness (mm) | Weight (kg/m ²) | Dimensions | Reinforcement |
|--|-----------------------------|----------------|-----------------------------|------------|---------------|
| PLAIN FINISH | | | | | |
| - | HYDROFELT 1.5FG-P | 1.5 | 2 | 1 x 20 | Fibre Glass |
| Th11215 | HYDROSTOP 2FG-P | 2 | 3 | 1 x 15 | Fibre Glass |
| Th11300 | HYDROSTOP 3FG-P | 3 | 4 | 1 x 10 | Fibre Glass |
| Th11400 | HYDROSTOP 4FG-P | 4 | 5 | 1 x 10 | Fibre Glass |
| Th31150 | HYDROFELT 1.5PY-P | 1.5 | 2 | 1 x 20 | Polyester |
| Th31210 | HYDROSTOP 2PY-P | 2 | 3 | 1 x 15 | Polyester |
| Th31300 | HYDROSTOP 3PY-P | 3 | 4 | 1 x 10 | Polyester |
| Th31400 | HYDROSTOP 4PY-P | 4 | 5 | 1 x 10 | Polyester |
| Th31500 | HYDROSTOP 5PY-P | 5 | 6 | 1 x 8 | Polyester |
| Th21200 | HYDROSTOP PLUS 2PY-P | 2 | 3 | 1 x 15 | Polyester |
| Th21300 | HYDROSTOP PLUS 3PY-P | 3 | 4 | 1 x 10 | Polyester |
| Th21400 | HYDROSTOP PLUS 4PY-P | 4 | 5 | 1 x 10 | Polyester |
| Th21500 | HYDROSTOP PLUS 5PY-P | 5 | 6 | 1 x 8 | Polyester |
| MINERAL FINISH (AVAILABLE IN GREEN, RED AND GREY) | | | | | |
| Th12250 | HYDROSTOP 2FG-M | 2 | 3 | 1 x 15 | Fibre Glass |
| Th12300 | HYDROSTOP 3FG-M | 3 | 4 | 1 x 10 | Fibre Glass |
| Th12400 | HYDROSTOP 4FG-M | 4 | 5 | 1 x 10 | Fibre Glass |
| Th32200 | HYDROSTOP 2PY-M | 2 | 3 | 1 x 15 | Polyester |
| Th32300 | HYDROSTOP 3PY-M | 3 | 4 | 1 x 10 | Polyester |
| Th32400 | HYDROSTOP 4PY-M | 4 | 5 | 1 x 10 | Polyester |
| Th32500 | HYDROSTOP 5PY-M | 5 | 6 | 1 x 8 | Polyester |

| Code | Commercial name | Thickness (mm) | Weight (kg/m ²) | Dimensions | Reinforcement |
|--------------------------|------------------------------|----------------|-----------------------------|------------|---------------|
| Th22200 | HYDROSTOP PLUS 2PY-M | 2 | 3 | 1 x 15 | Polyester |
| Th22300 | HYDROSTOP PLUS 3PY-M | 3 | 4 | 1 x 10 | Polyester |
| Th22400 | HYDROSTOP PLUS 4PY-M | 4 | 5 | 1 x 10 | Polyester |
| - | HYDROSTOP GARDEN | 3 | 4 | 1 x 8 | Polyester |
| GEOTEXTILE FINISH | | | | | |
| Th11400 | HYDROSTOP 4FG-SP | 4 | 5 | 1 x 10 | Fibre Glass |
| Th23300 | HYDROSTOP PLUS 3PY-SP | 3 | 4 | 1 x 10 | Polyester |
| Th23400 | HYDROSTOP PLUS 4PY-SP | 4 | 5 | 1 x 10 | Polyester |



SBS MEMBRANES



SELF-ADHESIVE MEMBRANES

| Code | Commercial name | Flexibility | Reinforcement | Weight (kg/m ²) | Dimensions | |
|--------|--|--------------|-----------------------|-----------------------------|------------|-------------|
| | | | | | m Roll | SQM/ Pallet |
| 141151 | POLYDAN 48 P PARKING / POLYDAN 4 BASEMENT | (SBS) -15 °C | Non - woven polyester | 4.8 | 8 x 1 | 184 |
| 192200 | SELF-DAN PE, 1.5mm Thick | (SBS) -15 °C | Without Reinforcement | 1.5 | 20 x 1 | 500 |
| 192235 | SELF-DAN PE PLUS, 1.5mm Thick | (SBS) -15 °C | Without Reinforcement | 1.5 | 20 x 1 | 500 |
| 192305 | SELF-DAN SP 2, 2mm Thick | (SBS) -15 °C | Without Reinforcement | - | 10 x 1 | 280 |
| 205017 | SELF-DAN AL 100 NATURAL | (SBS) -15 °C | Without Reinforcement | 1.2 | 10 x 1 | 430 |

SELF-ADHESIVE TAPES

| Code | Commercial name | Flexibility | Reinforcement | Thickness (mm) | Weight (kg/m ²) | Dimensions | |
|--------|--------------------------------|--------------|-----------------------|----------------|-----------------------------|------------|-------------|
| | | | | | | m Roll | SQM/ Pallet |
| 205001 | SELF-DAN NATURAL (0.10) | (SBS) -15 °C | Without Reinforcement | 1.2 | 1.2 | 10 x 1 | 280 |



BITUMINOUS PRIMERS AND OTHERS

TIKI PRIME W

TIKI PRIME W is an emulsion of special grade bitumen, minerals and water in paste form for the use as primer.

Based on required consistency, **TIKI PRIME W** can be mixed with water maximum in **1:1** ratio.

TIKI PRIME S (Mfd. to IS: 3384 - 1986)

TIKI PRIME S is quick drying low viscosity oil based bituminous primer in liquid form with high penetrating power applied at a covering rate of 4m^2 to 6m^2 per litre on dry surface.

Uses

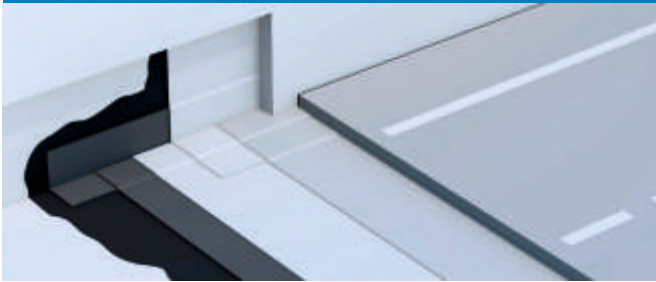
It is used as primer on concrete, masonry, metal, wood and stone surfaces for sealing substrate pores and promote adhesion.

| Code | Commercial name | Description | Approximate Yield | Packaging |
|---------|--------------------------|--|---|-----------|
| RI21000 | TIKI PRIME W | Bitumen Primer, Water Base | 4 to 6 m ² /Kg. | 20 Kg |
| RI11000 | TIKI PRIME S | Bitumen Primer, Oil Base | 4 to 6 m ² /Ltr | 20 L |
| RI51000 | TIKI FLASH | Bitumen Base Aluminium Paint | 6 to 8 m ² /Ltr | 20 L |
| RI61000 | TIKI BOND | Cold Applied Bitumen Adhesive for Bituminous Sheets | 0.5 to 2.5 kg/m ² (Depending on surface.) | 20 Kg |
| RI73000 | TIKI RBA COMPOUND | Cold Applied Rubberised Bituminous Adhesive for Thermal Insulation | 0.3 to 0.5 Ltr/ m ² | 20 L |
| RI41000 | TIKI PLAST | Cold Applied Bituminous Compound for Sealing Cracks/Joints | - | 20 Kg |

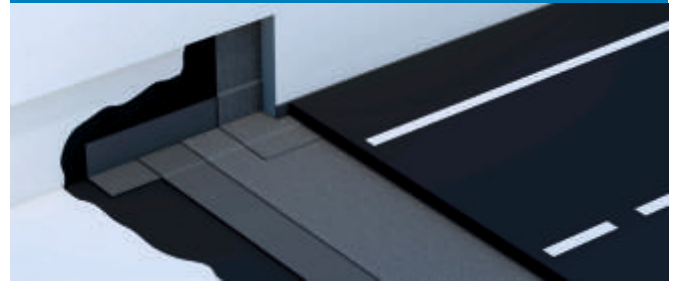


BITUMINOUS WATERPROOFING SOLUTIONS

VEHICLES ROOF



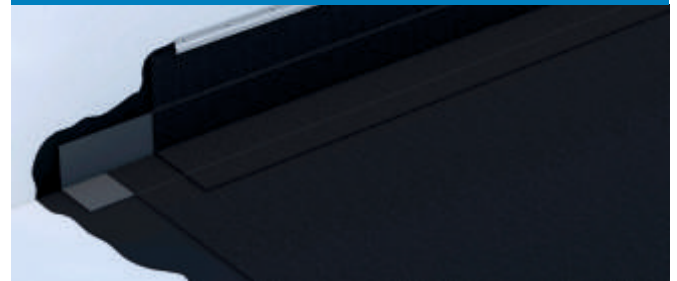
VEHICLES ROOF



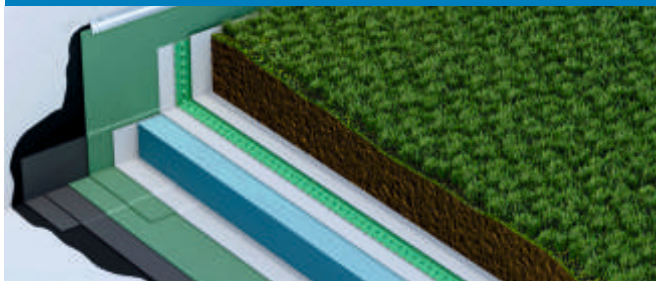
NON-WALKING INVERTED ROOF



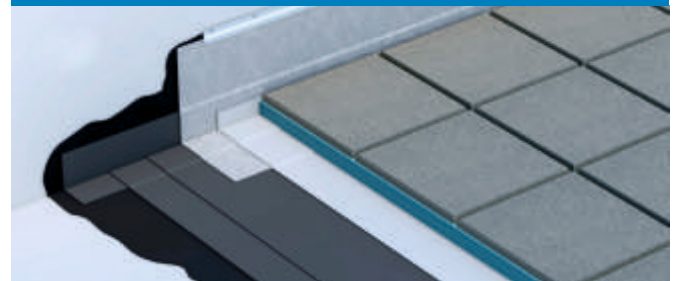
NON-WALKING ROOF



INTENSIVE GREEN ROOF



PRIVATE USE WALKING INVERTED ROOF



MULTI-USE NON-BITUMEN PRIMERS-ACRYLIC, PU & EPOXY

| Code | Commercial name | Description | Kit Size | Packaging |
|---------|----------------------------------|---|----------|-----------------------------|
| L750350 | TIKI PRIME PU | 1K PU Primer | N.A. | 20 L |
| L760070 | DANOPRIMER I-W | 1K Acrylic Primer | N.A. | 20 Kg |
| L760050 | DANOPRIMER I-EPS RESIN | 2K Solvent Free Epoxy Primer for use with food grade epoxy coating, polyurethane, polyurea, spray PU foam, etc. | 15 Kg | 10 Kg Resin + 5 Kg Hardener |
| L760060 | DANOPRIMER I-EPS HARDENER | | | |



INTEGRAL WATERPROOFING, CRYSTALLINE ADMIXTURE AND CRYSTALLINE COATING

TIKIDAN's waterproofing admixture is ideal solution for making concrete and mortar cohesive and preventing segregation. The crystalline waterproofing solutions consist of various range of products including crystalline admixtures and crystalline waterproofing coatings.

| Commercial name | Description | Dosage | Packaging |
|-------------------------------|--|--|-----------|
| DANOMIX LW | Integral Waterproofing Admixture | 125ml to 150 ml / 50 Kg bag of cement for Mortar & 200 ml / 50 Kg bag of cement for Concrete | 20 L |
| TIKICRYST 100 | Crystalline Waterproofing Admixture (Powder) | N.A. | 25 Kg |
| TIKICRYST 200 | Crystalline Waterproofing Admixture (Powder) | Dosage 2 kg/cum of concrete | 25 Kg |
| TIKICRYST 400 | Crystalline Waterproofing Admixture (Powder) | Dosage 4 kg/cum of concrete | 25 Kg |
| TIKICRYST BC | Crystalline Waterproofing by Dry-Shake Method | N.A. | 25 Kg |
| TIKI AQUASEAL CWP | Crystalline Waterproofing Coating | N.A. | 25 Kg |
| TIKI AQUASEAL CWP PLUS | High Performance Crystalline Waterproofing Coating | N.A. | 25 Kg |



LIQUID APPLIED WATERPROOFING

TIKIDAN's elastomeric liquid waterproofing solutions consist of various range of products such as Pure polyurethane/ modified polyurethane, acrylic/SBR Latex polymer modified and water borne / solvent-based coatings.

| Code | Commercial name | Description | Packaging |
|----------|-------------------------------------|---|--|
| L760030 | TIKI AQUASEAL AR | Acrylic-PU Based Crack Bridging and Waterproofing Protective Coating | 25 Kg Pail |
| D721002 | DANOCRET I-PROTECT FLEX | 2K Polymer Modified Cementitious Flexible Waterproofing Coating | Combo Pack: 5 Kg (Liq.) + 10 Kg (Fil.) |
| L750000 | TIKI AQUASEAL PU-A | 1K PU Coating, Water Base, Non-UV Resistant, Solids > 65% | 20 Kg Pail |
| L750010 | TIKI AQUASEAL PU-S | 1K PU Coating, Solvent Base, UV Resistant, Solids > 85% | 25 Kg Drum |
| L750020 | TIKI AQUASEAL PU-B | 1K Pitch (Bitumen) Modified PU Coating, Non-UV Resistant, Solids 90% | 24 Kg Pail |
| L750040 | TIKI AQUASEAL PU-AHS (BLACK) | 1K PU Coating, Water Base, UV Resistant, Solids > 80%, Black/White Colour | 25 Kg Pail |
| - | TIKI AQUASEAL WR | 1K Silane - Siloxane based water repellent coating. | 25 Kg Pail |
| - | TIKI AQUASEAL PU-SHE | 1K PU Coating, Solvent Base, Non-UV Resistant, High Elongation | 25 Kg Pail |
| - | TIKI AQUASEAL PU2K | 2K Hand Applied Polyurethane | Combo Pack: 10 L |
| - | TIKI AQUASEAL BMP | 1K Bitumen modified PU coating. | 20 kg Drum |
| - | TIKI AQUASEAL RMB | 1K Rubber modified bituminous elastomeric coating. | 20 Kg Pail |
| - | TIKI AQUASEAL ARR | 1K U.V resistant, solar reflective, reinforced acrylic coating | 20 Kg Pail |
| V1750260 | DANOCRET SBR | 1K SBR Latex Polymer Modifier, Solids 40% | 26 Kg Drum |
| V1750250 | DANOCRET AR | 1K Acrylic Polymer Modifier, Solids 34% | 26 Kg Drum |
| - | DANOCRET AR-HS | 1K Acrylic Polymer Modifier, Solids > 55% | 26 Kg Drum |



TIKI Aquaseal PU-S



TIKI Aquaseal RMB



TIKI Aquaseal ARR



DANOCRET I Protect Flex



REVESTIDAN Indoor

| Code | Commercial name | Description | Can/pallet | Packaging |
|----------------------------|---------------------------|---|------------|--------------|
| 725003 725001 725002 | REVESTIDAN REIMPER | 1K Water Based UV Resistant Elastomeric PU Coating. | 27 / 80 | 20 Kg / 5 kg |
| 724001 724002 | REVESTIDAN INDOOR | 1K Elastic Membrane Waterproofing Coating for Indoor Use. | 27 / 80 | 20 Kg / 5 Kg |



SPRAY APPLIED PU / POLYUREA WATERPROOFING

DANOCOAT is **TIKIDAN'S** maximum performance waterproofing membrane, specially formulated and recommended for the most demanding waterproofing, protection and sealing jobs, both in new construction and in rehabilitation.

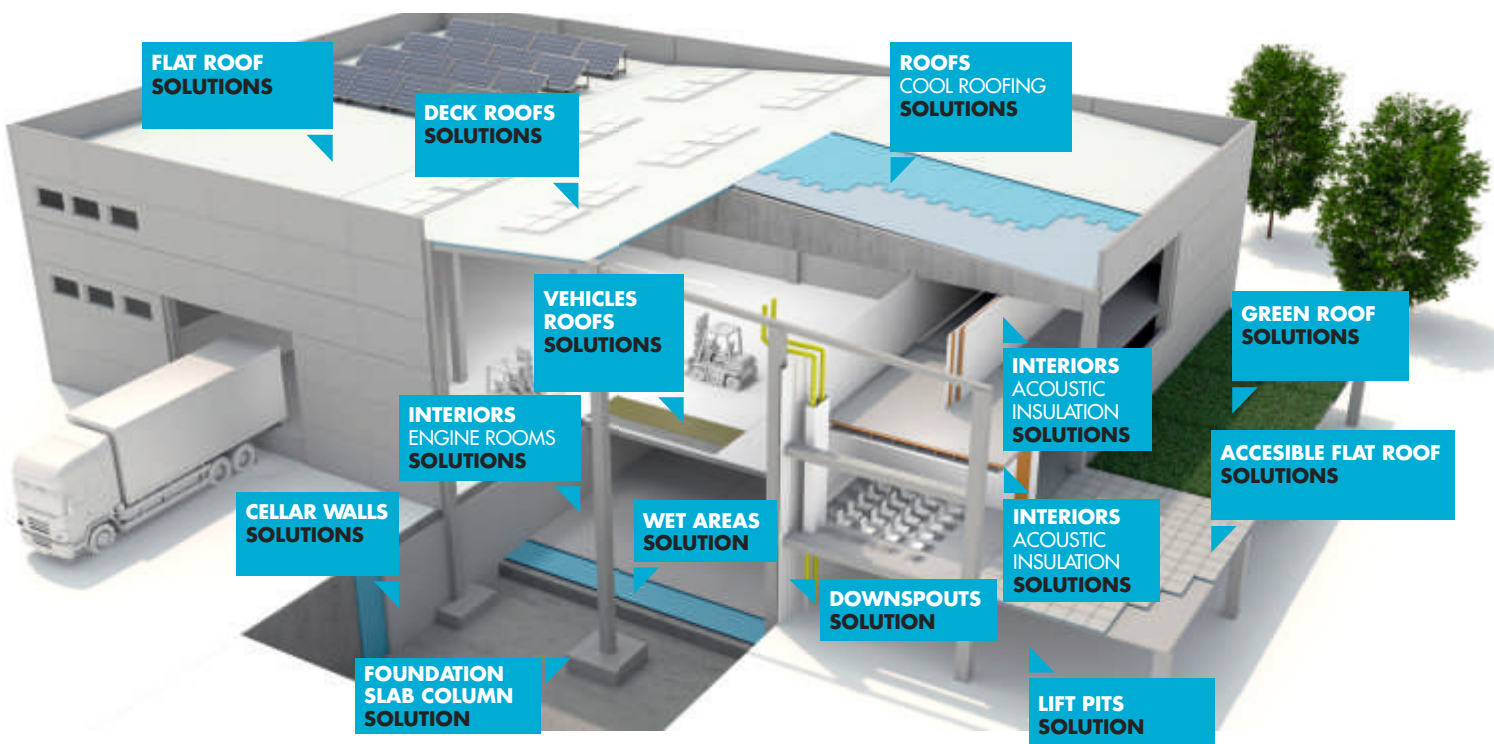
| Commercial name | Description | Packaging |
|---------------------------------------|--|------------|
| DANOCOAT I-500 PART A | 2K Spray Applied Elastomeric Coating | 200 L Drum |
| DANOCOAT I-500 PART B | | 200 L Drum |
| DANOCOAT IM 400 PART A | 2K Special Polyurea based Elastomeric Coating | 20 KG |
| DANOCOAT IM 400 PART B | | 20 KG |
| DANOCOAT I-PU2K PART A | 2K Spray Applied Polyurethane Coating | 200 L Drum |
| DANOCOAT I-PU2K PART B | | 200 L Drum |
| TIKICOAT TC - SR PART A | 2K Solar Reflective, Aliphatic Top Coat | 20 L |
| TIKICOAT TC - SR PART B | | 20 L |
| DANOPRIMER EP PART A | 2K Solvent Free Epoxy Primer for Polyurea / PU for Porous Substrates & Residual Humidity | 170 KG |
| DANOPRIMER EP PART B | | 200 KG |
| DANOPRIMER EPS PART A | 2K Solvent Free Epoxy Primer for Polyurea / PU for Mineral Supports | 210 KG |
| DANOPRIMER EPS PART B | | 180 KG |
| DANOCOAT 250 PART A | 2K Pure Polyurea, Spray Applied | 225 KG |
| DANOCOAT 250 PART B, GREY | | 210 KG |
| DANOCOAT PAS 600 COMP. A WHITE | 2K Polyaspartic Top Coat, high mechanical resistance, > 95% solid content, storm and UV resistant for DANOCOAT and DANOFLOOR systems | 7 KG |
| DANOCOAT PAS 600 COMP. B | | 3 KG |
| DANOCOAT PAS 700 COMP. A WHITE | 2K Elastic Polyaspartic Top Coat, > 95% solid content, storm and UV resistant for DANOCOAT, DANOPUR and DANOFLOOR systems | 6.5 KG |
| DANOCOAT PAS 700 COMP. B | | 3.5 KG |



SYNTHETIC WATERPROOFING

PVC MEMBRANES

| Commercial name | Description | Thickness (mm) | Dimensions (m) |
|------------------------------|---|----------------|----------------|
| TIKIPLAN SL 2017 | PVC Membrane, Non-Reinf., For Underground/Tunnels | 2 | 2.1 x 20 |
| TIKIPLAN SL 3017 | PVC Membrane, Non-Reinf., For Underground/Tunnels | 3 | 2.1 x 15 |
| TIKIPLAN PVC T - LOCK | PVC Membrane with T-locks for Basements & Confined Area Retaining Walls | 2 | 1.4 x 20 |
| TIKIPLAN PVC T - LOCK | PVC Membrane with T-locks for Basements & Confined Area Retaining Walls | 1.5 | 1.4 x 20 |

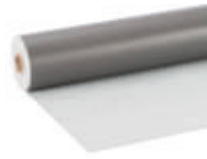




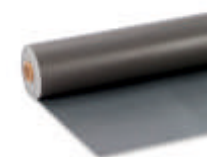
SYNTHETIC WATERPROOFING

PVC MEMBRANES

| Code | Commercial name | Dimensions (m) | Thickness (mm) | SQM | |
|--|------------------------------------|----------------|----------------|-------|--------|
| | | | | Roll | Pallet |
| PVC SHEETS WITH POLYESTER REINFORCEMENT | | | | | |
| 210017 | DANOPOL HS 1.2 LIGHT GREY | 1.06x25 | 1.2 | 26.50 | 424 |
| 210032 | | 1.80x20 | | 36 | 540 |
| 210038 | DANOPOL HS 1.5 LIGHT GREY | 1.06x25 | 1.5 | 21.20 | 339.20 |
| 210033 | | 1.06x25 | | 27 | 405 |
| 210039 | DANOPOL HS 1.8 LIGHT GREY | 1.06x17 | 1.8 | 18.02 | 288.32 |
| 210034 | | 1.80x13 | | 23.40 | 351 |
| 210054 | DANOPOL HS 1.2 DARK GREY | 1.06x25 | 1.2 | 26.50 | 424 |
| 210004 | | 1.80x20 | | 36 | 540 |
| 210059 | DANOPOL HS 1.5 DARK GREY | 1.06x20 | 1.5 | 21.20 | 339.20 |
| 210049 | | 1.80x15 | | 27 | 405 |
| 210074 | DANOPOL HS 1.8 DARK GREY | 1.80x13 | 1.8 | 23.40 | 351 |
| 210063 | DANOPOL HS 1.5 COOL ROOFING | 1.06x20 | 1.5 | 21.20 | 339.20 |
| 210053 | | 1.80x15 | | 27 | 405 |
| PVC SHEETS WITH FIBRE GLASS REINFORCEMENT | | | | | |
| 210027 | DANOPOL FV 1.2 LIGHT GREY | 1.80x20 | 1.2 | 36 | 540 |
| 210029 | DANOPOL FV 1.5 LIGHT GREY | 1.80x15 | 1.5 | 27 | 405 |
| 210030 | DANOPOL FV 1.8 LIGHT GREY | 1.80x13 | 1.8 | 23.40 | 351 |



DANOPOL HS Light Grey



DANOPOL HS Dark Grey



DANOPOL HS Cool Roofing



DANOPOL DW HS



DANOPOL FV Light Grey

ETA 1

DIT 2

Certificates

(1) European Technical Assessment: E.T.A. "DANOPOL HS FM"

(2) D.I.T. "DANOPOL Slope Zero"



SYNTHETIC WATERPROOFING

PVC ACCESSORIES

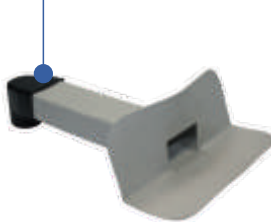
| Commercial name | Description | Packaging |
|-----------------------------------|---|---------------|
| TIKIPLAN WS 280 | PVC Waterstop for Raft Compartmentalization | 6 m Length |
| TIKIPLAN RDL without SCREW | TIKIPLAN RDL without SCREW | 1000 Nos./Box |
| TIKIPLAN RDL with SCREW | TIKIPLAN RDL with HILTI/FISCHER SCREW | 1000 Nos./Box |
| TIKIPLAN PTA | PVC Pipetta | 100 Nos./Box |
| TIKIPLAN C-BLT | PVC C-Bolt or Anchor (For Tunnels) | 20 Nos. |
| TIKIPLAN RIH | Reinjectible Hose | 200 m |

AUXILIARY PRODUCTS

Bowl PVC Vertical
Outlet Ø 80 to 125mm



Side Bowl PVC Curve
Ø 80 to 100mm



PVC Grommets



Elastydan PU 40
Gr Sealant



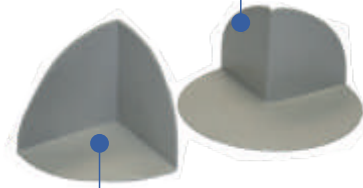
THF - Chemical
for Welding

PVC Glue Dan



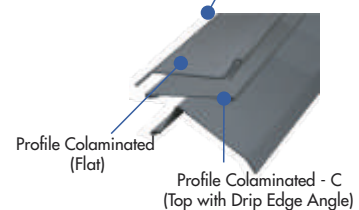
Special Bowl 60-160mm
Diameter PVC

PVC External Corner



PVC Internal Corner

Profile Colaminated B
(with Tab)



Profile Colaminated
(Flat)

Profile Colaminated - C
(Top with Drip Edge Angle)



DRAINAGE & PROTECTION

DANODREN

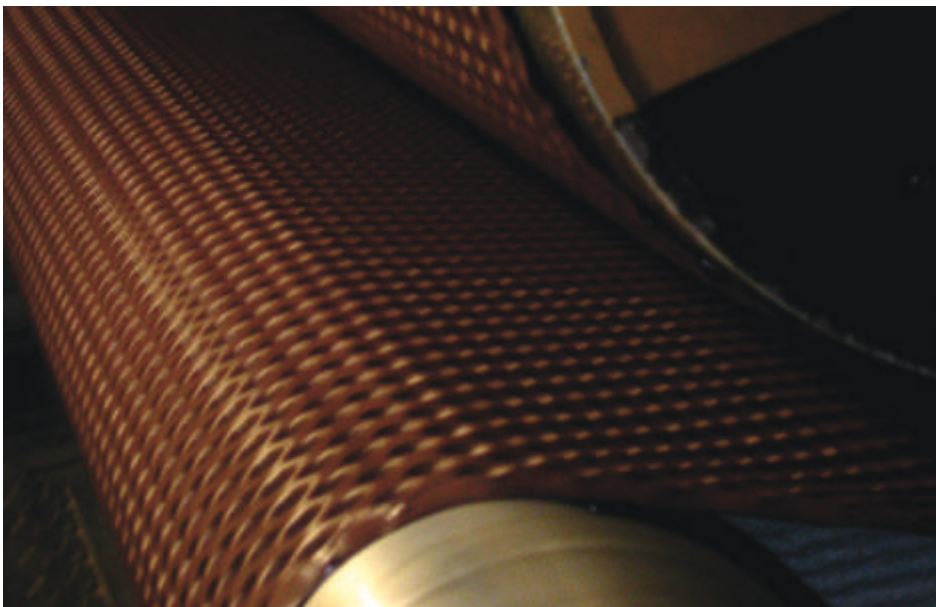
It is compression resistant hard wearing flexible Nodular sheet made from virgin High Density Polyethylene (HDPE) designed to direct water away from the surface of the structure towards the appropriate drainage system.

ADVANTAGES

- High un-interrupted drainage capacity eliminates hydrostatic pressure build-up.
- Easy to handle and eliminates use of heavy gravel as drainage layer reducing dead load on structure.
- Quick installation and low installation cost.
- Reduced space requirement for drainage.
- Ideal for vertical surfaces & protects waterproof membrane from abrasion & puncture damage during backfilling.

AREAS OF APPLICATION

- Landscapes Drainage
- Planter Box Drainage
- Basement Wall Drainage
- Underslab Drainage
- Sportsfield Drainage
- Tunnels
- Underpasses and Box Culvert



DRAINAGE & PROTECTION



| Code | Commercial name | Description | Dimensions (m) | Rolls/ Pallet |
|--|--------------------------|---|----------------|---------------|
| VERTICAL DRAINAGE WITH NODULAR HDPE SHEET | | | | |
| 314304 | DANODREN H15 | High density polyethylene nodular sheet for drainage and protection of waterproofing | 2.10x28 | 6 |
| 314302 | | | 1.00x28 | 12 |
| 314086 | DANODREN H25 | | 2.10x20 | 6 |
| 314041 | DANODREN G-20 | Nodular sheet of high density polyethylene with 20 mm nodules for drainage of buried structures subjected to high pressures | 2.00x20 | 5 |
| VERTICAL DRAINAGE WITH NODULAR HDPE SHEET AND GEOTEXTIL | | | | |
| 314321 | DANODREN H15 PLUS | High density polyethylene nodular sheet with geotextile | 2.10x15 | 6 |
| 314065 | DANODREN H25 PLUS | | 2.10x20 | 6 |
| HORIZONTAL DRAINAGE | | | | |
| 314076 | DANODREN GARDEN | Green high density polyethylene nodular sheet with geotextile for horizontal drain roofs | 2.10x20 | 6 |
| 314051 | DANODREN R-20 | Green high density polyethylene nodular sheet with overflow | 2.00x20 | 5 |



DANODREN H

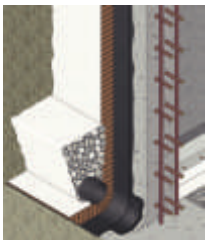


DANODREN H PLUS

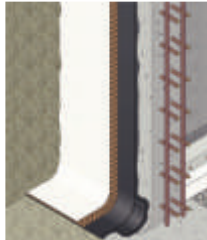


DANODREN Garden

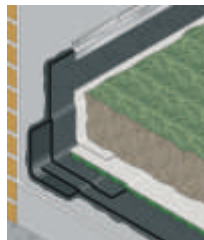
PROTECTION + DRAINAGE + FILTERING



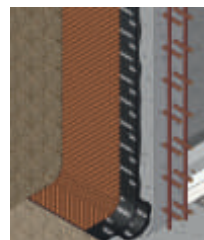
Underground Walls



Waterproofing Protection



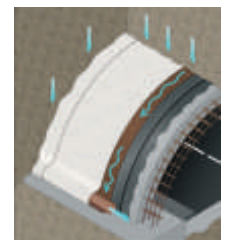
Green Roofs



Waterproofing Protection



Concrete Floors



False Tunnels and Underpasses



GEOTEXTILES

DANOFELT range is non-woven mechanically bonded needle punched polyester/ Polypropylene geo-textiles used for following functions.

| Commercial name | Description | GSM | Dimensions (m) |
|--------------------------|---|-----|----------------|
| ARMADURA IP 20 | Scrim Cloth / Geotextile for Waterproofing Sandwich Layer | 20 | 2.1 x 20 |
| ARMADURA IP 34 | | 34 | 2.1 x 15 |
| ARMADURA IP 40 | | 40 | 1.4 x 20 |
| ARMADURA IC 40 | Geotextile for Waterproofing Sandwich Layer | 40 | 1.4 x 20 |
| DANOFELT PY I-120 | Non-woven Polyester Geotextile | 120 | 1 x 20 |
| DANOFELT PY I-150 | | 150 | 1 x 20 |
| DANOFELT PY I-300 | | 300 | 1 x 20 |
| DANOFELT PY I-500 | | 500 | 1 x 20 |
| DANOFELT PY I-700 | | 700 | 1 x 20 |
| DANOFELT PY I-900 | | 900 | 1 x 20 |
| DANOFELT PP I-200 | Non-woven Polypropylene Geotextile | 120 | 1 x 20 |
| DANOFELT PP I-300 | | 150 | 1 x 20 |
| DANOFELT PP I-500 | | 300 | 1 x 20 |
| DANOFELT PP I-700 | | 500 | 1 x 20 |
| DANOFELT PP I-900 | | 700 | 1 x 20 |



THERMAL INSULATIONS



TIKIDAN THERMAL INSULATION SYSTEMS are solutions that help limit the amount of energy needed by a building to obtain thermal comfort for its users, effectively contributing to a reduction in energy consumption and in CO² emissions.

The DANOPREN product line is designed to provide an effective, fast and safe solution for all the insulation needs for a building's thermal enclosure.

These solutions are free of CFC, HCFC and HFC.

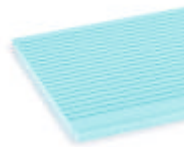


THERMAL INSULATIONS

| Code | Commercial name | Thickness (mm) | Dimensions (m) | Panels/ Bundle | SQM/Bundle | SQM/ Pallet |
|-----------------------------|--------------------|----------------|----------------|----------------|------------|-------------|
| INVERTED FLOORS ROOF | | | | | | |
| 484001 | DANOPREN TR | 30 | 1.25 x 0.60 | 14 | 10.50 | 126.00 |
| 484003 | | 40 | | 10 | 7.50 | 90.00 |
| 484004 | | 50 | | 8 | 6.00 | 72.00 |
| 484007 | | 60 | | 7 | 5.25 | 63.00 |
| 484008 | | 80 | | 5 | 3.75 | 45.00 |
| 484009 | | 100 | | 4 | 3.00 | 36.00 |
| PITCHED ROOF | | | | | | |
| 483003 | DANOPREN TL | 40 | 1.25 x 0.60 | 10 | 7.50 | 90.00 |
| 483004 | | 50 | | 8 | 6.00 | 72.00 |
| 483006 | | 60 | | 7 | 5.25 | 63.00 |
| 483007 | | 80 | | 5 | 3.75 | 45.00 |
| AIR CHAMBER | | | | | | |
| 482001 | DANOPREN PR | 30 | 2.60 x 0.60 | 14 | 21.84 | 262.08 |
| 482002 | | 40 | | 10 | 15.60 | 187.20 |
| 482003 | | 50 | | 8 | 12.48 | 149.76 |
| 482004 | | 60 | | 7 | 10.92 | 131.04 |
| 482007 | | 80 | | 5 | 7.80 | 93.60 |
| 482008 | | 100 | | 4 | 6.24 | 74.88 |



DANOPREN TR



DANOPREN TL



DANOPREN PR



DANOPREN 500

Certificates

AENOR: Spanish Association for Standardization and Certification. TIKIDAN products that have passed the tests and audits in accordance with the European standard UNE EN 13164 and the regulations of AENOR, thus obtaining AENOR's voluntary Quality Certification (Brand N), for the safety and trust of installers, distributors and owners.

ACERMI: Association for the Certification of Insulation Materials. TIKIDAN products that have passed the tests and audits in accordance with the European standard UNE EN 13164 and the regulations of ACERMI, thus obtaining the voluntary certification of quality ACERMI for security and confidence of installers, distributors and owners.



THERMAL INSULATIONS

| Code | Commercial name | Thickness (mm) | Dimensions (m) | Panels/ Bundle | SQM/Bundle | SQM/Pallet |
|--|--------------------|----------------|----------------|----------------|------------|------------|
| PITCHED ROOF WITH TRAYED TILT. FLOORS | | | | | | |
| 480013 | DANOPREN CH | 30 | 2.60 x 0.60 | 14 | 21.84 | 262.08 |
| 480014 | | 40 | | 10 | 15.60 | 187.20 |
| 480016 | | 50 | | 8 | 12.48 | 149.76 |
| 480017 | | 60 | | 7 | 10.92 | 131.04 |
| EXTERNAL FACADES. EIFS SYSTEM | | | | | | |
| 481004 | DANOPREN FS | 30 | 1.25 x 0.60 | 14 | 10.50 | 126 |
| 481008 | | 40 | | 10 | 7.50 | 90 |
| 481013 | | 50 | | 8 | 6.00 | 72 |
| 481017 | | 60 | | 7 | 5.25 | 63 |



DANOPREN FS

Certificates

AENOR: Spanish Association for Standardization and Certification. TIKIDAN products that have passed the tests and audits in accordance with the European standard UNE EN 13164 and the regulations of AENOR, thus obtaining AENOR's voluntary Quality Certification (Brand N), for the safety and trust of installers, distributors and owners.

ACERMI: Association for the Certification of Insulation Materials. TIKIDAN products that have passed the tests and audits in accordance with the European standard UNE EN 13164 and the regulations of ACERMI, thus obtaining the voluntary certification of quality ACERMI for security and confidence of installers, distributors and owners.



THERMAL INSULATIONS

TIKI FOAM

TIKIFOAM SPF 40 is two component CFC free, polymeric M.D.I based system to produce rigid polyurethane foam with closed cells >95% by spray process for high performance sustainable thermal insulation in building envelope.

ADVANTAGES

- Spray applied - rapid installation and quick setting.
- Seamless - no thermal bridges - maximum energy saving.
- Non - sagging.
- VOC free.
- Light weight - negligible dead load on structure.
- Fully bonded - no water tracking behind foam.
- High wind uplift resistance.
- Compressive resistance - withstands overlay load.
- Durable and sustainable solution.

AREAS OF APPLICATION

- For roof and wall insulation.
- As insulating solution to generate cool roof system.
- For tank insulation.
- For insulation applications in cold storages.
- As air barrier systems.
- As light weight filler for filling sunk areas.

| Product | TIKIFOAM SPF 40 |
|---|--|
| Mixing Ratio, by Weight | 100 : 109 (Component A:Component B) |
| Supply | Part A (Polyol) is packed in 200 kg Blue colour drum & Part B (ISO) is packed in 250 kg Red-colour drum. |
| Coverage | Approx. 2.3 Kg. / m ² , For Avg. 50 mm Thickness |
| Density | 45 Kg./m ³ |
| Thermal Conductivity (K-Value) @25°C | 0.023 w/m ⁰ K |



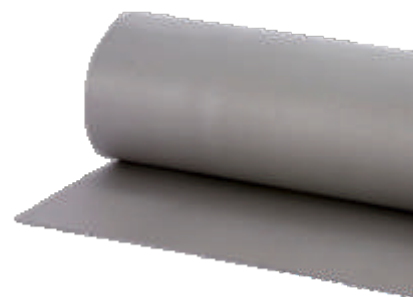
ACOUSTIC SOLUTIONS



TIKIDAN ACOUSTIC INSULATION SYSTEMS are complete solutions designed to achieve proper acoustic quality inside buildings. All products comprising the acoustic box of the premises to be insulated are designed to reduce or prevent the transmission of airborne and structural noises between the various rooms in a building.



ACOUSTIC SOLUTIONS

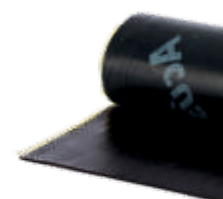


| Code | Commercial name | Description | Thickness (mm) | Dimensions (m) | SQM/pallet |
|---|-----------------------------------|---|----------------|----------------|------------|
| MULTILAYER MATERIALS FOR ACOUSTIC INSULATION TO LOW, MEDIUM AND HIGH FREQUENCIES | | | | | |
| 610060* | SONODAN PLUS SELF-ADHESIVE | Multilayer sound insulation panel with self adhesive finish | 40 | 1.20x1/panel | 48 |
| 610090 | DANOFON | | 28 | 6x1/roll | 54 |
| 610083 | ACUSTIDAN 16/2 | Two-layer insulation panel for slabs | 18 | 6x1/roll | 72 |
| 610080 | ACUSTIDAN 16/4 | | 20 | 6.x1/roll | 72 |



DANOFON

| Code | Commercial name | Thickness (mm) | Dimensions (m) | SQM/pallet |
|---|---|----------------|----------------|------------|
| ANTI-RESONANT MATERIALS TO DECREASE OWN VIBRATIONS OF LIGHT RIGID ELEMENTS | | | | |
| 610002 | ACOUSTIC MEMBRANE DANOSA M.A.D 2 | 2 | 12x1/roll | 360 |
| 610003 | ACOUSTIC MEMBRANE DANOSA M.A.D 4 | 4 | 6x1/roll | 180 |
| 610005 | ACOUSTIC MEMBRANE DANOSA M.A.D 4 SELF-ADHESIVE | 4 | 6x1/roll | 180 |
| 610011 | ACOUSTIC MEMBRANE DANOSA M.A.D 6 | 6 | 1 x 4.5/roll | 126 |



M.A.D.

| Code | Commercial name | Thickness (mm) | Dimensions (m) | Diameter (m) |
|--|----------------------|----------------|----------------|--------------|
| CLOSED CELL POLYTHELENE SHEETS TO REDUCE IMPACT NOISE | | | | |
| 620015 | IMPACTODAN 5 | 5 | 1x15 | 0.33 |
| 620005 | | | 2x50 | 0.60 |
| 620017 | IMPACTODAN 10 | 10 | 2x25 | 0.60 |
| 620032 | CONFORDAN | 3 | 0.95x15 | - |
| 620032 | IMPACTODAN BT | 3 | 0.95x15 | - |



SONODAN PLUS SELF-ADHESIVE

DIT



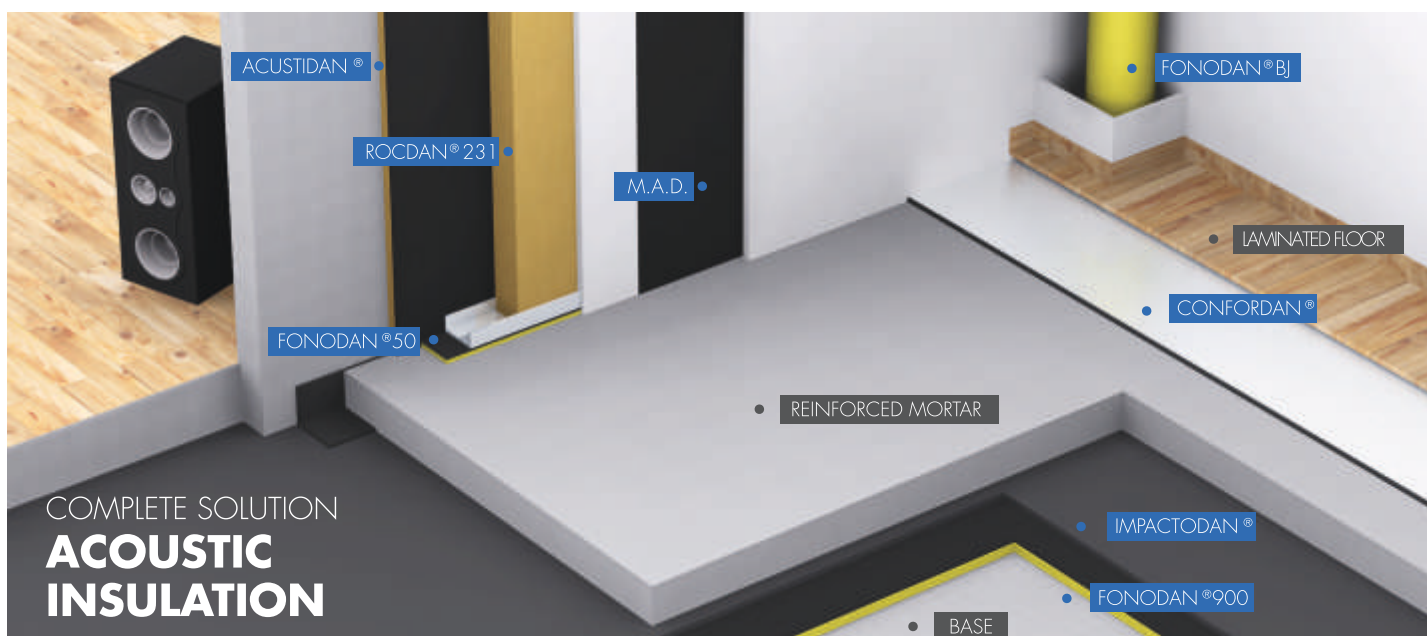
ACOUSTIC SOLUTIONS

| Code | Commercial name | Thickness (mm) | Dimensions (m) |
|---------------------------|--|----------------|----------------|
| AUXILIARY PRODUCTS | | | |
| 620042 | Wall separating IMPACTODAN band | 10 | 0.15 x 12.5 m |
| 620044 | Peripheral band 200 | 3 | 0.2 x 25 m |
| 620045 | Overlapping auto adhesive band 70 | 3 | 0.07 x 25 m |
| 620035 | Self-adhesive tape CONFORDAN | 0.03 | 0.05 x 50 m |



Wall separating band

| Code | Commercial name | Description | Thickness (mm) | Dimensions (m) | Rolls per pallet |
|---|--------------------|---|----------------|----------------|------------------|
| ANTI-RESONANT AND SHOCK ABSORBING MATERIALS FOR REDUCTION OF IMPACT NOISE & VIBRATIONS | | | | | |
| 610202 | FONODAN 50 | Auto-adhesive band for acoustic insulation improvement of plasterboard systems. | 4 | 0.046x 10 | 7 rolls/box |
| 610207 | FONODAN BJ | Auto-adhesive band for acoustic insulation of drainpipes | 4 | 0.42x 10 | 32 rolls/palet |
| 610209 F | FONODAN 130 | Auto-adhesive band for acoustic insulation reinforcement of drainpipes corners | 4 | 0.132x 10 | 4 rolls/box |
| 610208 | FONODAN 70 | Auto-adhesive band for acoustic insulation reinforcement of the gully trap | 4 | 0.066x 10 | 8 rolls/box |
| 610201 | FONODAN 900 | Anti-resonant strip between rigid elements | 4 | 0.92x 10 | 16 rolls/pallet |



COMPLETE SOLUTION
ACOUSTIC INSULATION

SEALANTS, CONSTRUCTION & EXPANSION JOINTS

TIKIDAN's range of Polyurethane, Polysulphide, Acrylic, modified bituminous & hybrid polymer sealants, hydro-swellable bars PVC water stoppers, flexible expansion joint tapes and joint sealing tapes compliment TIKIDAN's waterproofing product range to provide complete waterproofing solution.

| Commercial name | Dimensions | Description | Packaging |
|---|-------------|---|-----------------------------------|
| EXJOFILLER BOARD - 12 MM NON-ISI | 12 mm Thick | Bitumen Filler Board, Non-ISI Bitumen Filler Board, ISI Bitumen Sealant | 4 ft x 4 ft |
| EXJOFILLER BOARD - 18 MM NON-ISI | 18 mm Thick | | 4 ft x 4 ft |
| EXJOFILLER BOARD - 25 MM NON-ISI | 25 mm Thick | | 4 ft x 4 ft |
| EXJOFILLER BOARD - 12 MM ISI | 12 mm Thick | | 4 ft x 4 ft |
| EXJOFILLER BOARD - 18 MM ISI | 18 mm Thick | | 4 ft x 4 ft |
| EXJOFILLER BOARD - 25 MM ISI | 25 mm Thick | | 4 ft x 4 ft |
| TIKI PLAST HD SEALANT | N.A. | | 25 kg |
| TIKI POLYSEAL PLUS 140, GUN GRADE | N.A. | 2K Polysulphide Sealant, Gun Grade 2K Polysulphide Sealant, Pour Grade | 4 Kg |
| TIKI POLYSEAL PLUS 140, GUN GRAD | N.A. | | 32 Kg |
| TIKI POLYSEAL PLUS 141, POUR GRADE | N.A. | | 32 Kg |
| TIKI PRIMER PS | N.A. | Primer for Polysulphide Sealant | 1 L |
| TIKISEAL PU 25 | N.A. | 1K PU Sealant, Shore A Hardness 25 | 600 ml Sausage, 20 Nos./Box |
| TIKISEAL PU 40 | N.A. | 1K PU Sealant, Shore A Hardness 40 | 600 ml Sausage, 20 Nos./Box |
| TIKISEAL PU 2K | N.A. | 2K PU Sealant, Pour Grade | Combo: 6.5 Kg. (Resin + Hardener) |
| TIKISWELL 1005 | 10mm x 5mm | Hydro-Swell Bar | 5 m Roll |
| TIKISWELL 1010 | 10mm x 10mm | | 5 m Roll |
| TIKISWELL 2005 | 20mm x 5mm | | 5 m Roll |
| TIKISWELL 2010 | 20mm x 10mm | | 5 m Roll |
| TIKISWELL 2020 | 20mm x 20mm | | 5 m Roll |

SEALANTS, CONSTRUCTION & EXPANSION JOINTS



| Commercial name | Dimensions | Description | Packaging | |
|--------------------------|---------------------------------------|---|-------------------------------------|-----------|
| TIKISWELL 2025 | 20mm x 25mm | Hydro-Swell Bar | 5 m Roll | |
| TIKI WSTOP NS 150 | 150mm x 10 mm | PVC Waterstops - Dumbell With Central bulb - Non ISI | 6 m Length | |
| TIKI WSTOP NS 230 | 230mm x 10 mm | | 6 m Length | |
| TIKI WSTOP IS 150 | 150mm x 10 mm | PVC Waterstops - Dumbell With Central bulb - ISI | 6 m Length | |
| TIKI WSTOP IS 230 | 230mm x 10 mm | | 6 m Length | |
| TIKIFLEX 3002-100 | 1 mm thk, 100 mm width | Flexible Polyolefin (FPO) Expansion Joint Tape | 20 m Roll | |
| TIKIFLEX 3002-150 | 1 mm thk, 150 mm width | | 20 m Roll | |
| TIKIFLEX 3002-200 | 1 mm thk, 200 mm width | | 20 m Roll | |
| TIKIFLEX 3002-250 | 1 mm thk, 250 mm width | | 20 m Roll | |
| TIKIFLEX 3002-300 | 1 mm thk, 300 mm width | | 20 m Roll | |
| TIKIFLEX 3002-500 | 1 mm thk, 500 mm width | | 20 m Roll | |
| TIKIFLEX 3003-100 | 2mm thk, 100 mm width | | 20 m Roll | |
| TIKIFLEX 3003-150 | 2mm thk, 150 mm width | | 20 m Roll | |
| TIKIFLEX 3003-200 | 2mm thk, 200 mm width | | 20 m Roll | |
| TIKIFLEX 3003-250 | 2mm thk, 250 mm width | | 20 m Roll | |
| TIKIFLEX 3003-300 | 2mm thk, 300 mm width | | 20 m Roll | |
| TIKIFLEX 3003-500 | 2mm thk, 500 mm width | | 20 m Roll | |
| TIKIFLEX 1001 | 120mm / 70mm with geotextile | | Joint Sealing Tape for Bathrooms | 50 m Roll |
| TIKIFLEX 1002 | 120mm / 70mm with Perforated sides | | | 50 m Roll |



CEMENTITIOUS UNDERLAY & FLOOR HARDENER

TIKIDAN's cementitious underlay designed for quick application over concrete floors as a floor-levelling compound and underlay for subsequent placement of floor coverings.

TIKIDAN's Floor Hardeners solution overcomes problems associated with thin granolithic screed such as shrinkage, cracking, slipping etc.

| Commercial name | Description | Packaging |
|-------------------------|----------------------------|-----------|
| DANOFLOOR UL-CEM | Cementitious Underlay | 30 Kg Bag |
| DANOFLOOR FHQ | Floor Hardener with Quartz | 30 Kg Bag |
| DANOFLOOR FHE | Floor Hardener with Emery | 30 Kg Bag |





EPOXY & POLYURETHANE COATINGS & TOPPING FOR FLOORS & WALLS

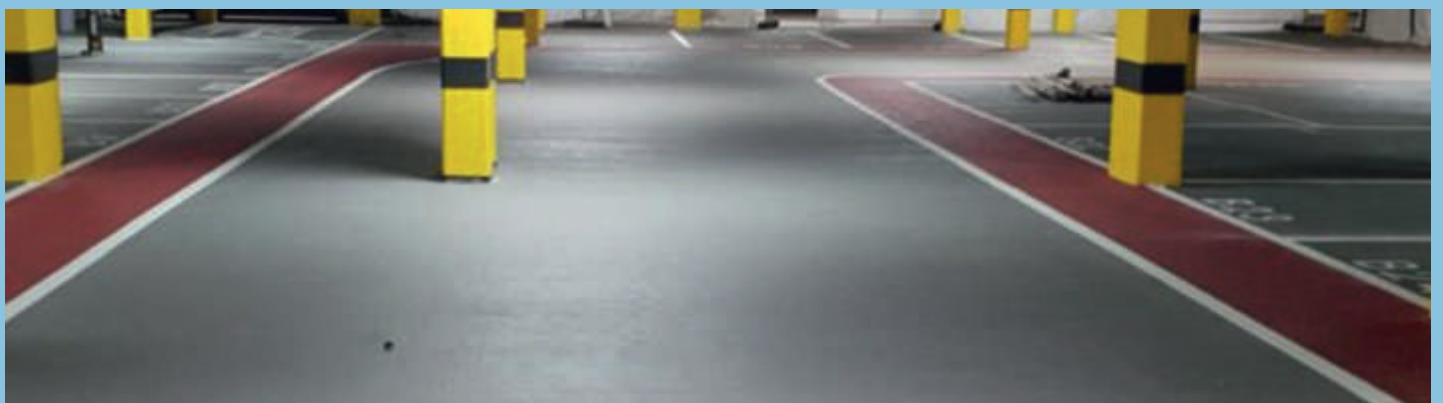
DANOFLOOR flooring solutions offer a wide range of resin floors for all sorts of requirements to extend the service life of floors in both new and renovation projects.

| Commercial name | Description | Kit Size | Packaging |
|---|--|----------|-----------|
| DANOFLOOR PRIMER EP, PART A (Resin) | 2K Solvent Free Epoxy Primer for Epoxy and PU range of Floor Toppings and Coatings | 7.5 Kg | 5 KG |
| DANOFLOOR PRIMER EP, PART B (Hardener) | | | 2.5 KG |
| DANOFLOOR UL EP, PART A (Resin) | 3K Solvent Free Self-Levelling Epoxy Underlay and Levelling Flooring System for Seal Undulations / Profile Imperfections on Floor | 20 Kg | 5 KG |
| DANOFLOOR UL EP, PART B (Hardener) | | | 5 KG |
| DANOFLOOR SF1 (Silica Filler) | | | 10 KG |
| DANOFLOOR SL, PART A (Resin) | 4K Self-Levelling Epoxy Flooring Top Coat for Use in Pharma, Food and Dairy Industries, Hospitals, Commercial Kitchens, Super Markets, and other areas | 18.15 Kg | 5 KG |
| DANOFLOOR SL, PART B (Hardener) | | | 2.75 KG |
| DANOFLOOR COLOR | | | 0.40 KG |
| DANOFLOOR SF2 (Silica Filler) | | | 10 KG |
| TIKICRETE MF, PART A (Resin) | Polyurethane Concrete Flooring | 20.25 Kg | 3 KG |
| TIKICRETE MF, PART B (Hardener) | | | 3 KG |
| TIKICRETE MF, PART C (Filler) | | | 14 KG |
| TIKICRETE MF, PART D (Color Paste) | | | 0.25 KG |
| DANOKOTE EP, PART A (Resin) | Epoxy Wear Coat 150 - 300 microns | 25 Kg | 20 KG |
| DANOKOTE EP, PART B (Hardener) | | | 5 KG |
| DANOKOTE PU, PART A (Resin) | 2K U.V. Resistant, Anti-microbial & Anti fungus PU Coating for Clean Rooms | 23 Kg | 20 KG |
| DANOKOTE PU, PART B (Hardener) | | | 3 KG |
| CONDUDAN, PART A (Resin) | Epoxy Conductive Primer Kit for Antistatic Flooring | 2.5 Kg | 1 KG |
| CONDUDAN, PART B (Hardener) | | | 1.5 KG |



EPOXY & POLYURETHANE COATINGS & TOPPING FOR FLOORS & WALLS

| Commercial name | Description | Kit Size | Packaging |
|--|--|----------|-------------------------------|
| DANOFLOOR SL AS, PART A (Resin) | 5K Epoxy based Antistatic Self-Levelling flooring system | 18.12 Kg | 5 KG |
| DANOFLOOR SL AS, PART B (Hardener) | | | 2.75 KG |
| DANOFLOOR COLOR | | | 0.40 KG |
| DANOFLOOR SL AS, PART D (Conductive Filler) | | | 10 KG |
| DANOFLOOR SL AS, PART E (Conductive Fibre) | | | 0.017 KG |
| DANODECK, PART A (Resin) | Base Coat and intermediate Coat for Car Deck Coating | 23.9 Kg | 10 KG |
| DANODECK, PART B (Hardener) | | | 3.5 KG |
| DANOFLOOR SF1 (Silica Filler) | | | 10 KG |
| DANOFLOOR COLOR | | | 0.40 KG |
| DANODECK WC, PART A (Resin) | 2K PU Wearing Coat for Car Deck Coating | 11.5 Kg | 10 KG |
| DANODECK WC, PART B (Hardener) | | | 1.5 KG |
| DANOKOTE EPS | 2K Epoxy Coating For Wall | 25 L | 20 LTR RESIN + 5 LTR HARDENER |
| DANOKOTE PUC RESIN | 2K PU Wall Coating - Glossy (Solvented) | 22 Kg | 20 KG |
| DANOKOTE PUC HARDENER | | | 2 KG |
| DANOKOTE PUW | 1K PU Wall Coating - Matt (Water base) | N.A. | 20 KG |
| DANOKOTE PAVE | 1K PU Coating for Paving, Water base | N.A. | 20 LTR |





INJECTION GROUTS FOR WATERPROOFING

TIKIDAN's PU Injection Grouts consist of one or two components resin based and foam based Polyurethane injection grouts.

| Commercial name | Description | Kit Size | Packaging |
|--------------------------|-------------------------------|----------|---|
| DANOINJECT PUF | PU Foam Injection | 11 Kg | Combo-10 Kg Resin + 1 Kg Accelerator |
| DANOINJECT PUF 2K | 2-component PU Foam injection | 10 Kg | Combo-5 Kg Resin + 5 Kg Hardener |
| DANOINJECT PUR 2K | PU Resin Injection | 16 Kg | Combo-10 Kg Resin + 6 Kg Hardener |



CURING COMPOUNDS

TIKIDAN's curing compounds solution are effective and economical alternative to conventional and expensive methods employing hessian, water or plastic sheets.

| Commercial name | Description | Packaging |
|--------------------|--------------------------|----------------|
| TIKICURE WB | Wax-based Curing Agent | 20 Kg & 200 Kg |
| TIKICURE AR | Resin-based Curing Agent | 20 Kg & 200 Kg |



CEMENTITIOUS MORTARS & GROUTS

TIKIDAN's Repair Products range consist of High strength mortars, grouts and micro-concrete.

| Commercial name | Description | Packaging |
|-------------------------|---|------------|
| TIKI CRM | Cementitious Repair Mortar | 25 Kg Bag |
| TIKIGROUT 45-CEM | Cementitious Grout | 30 Kg Bag |
| TIKIGROUT UW-CEM | Cementitious Under Water Grout | 30 Kg Bag |
| TIKIGROUT EP | 3K High Strength Flowable Epoxy Grout | 20 Kg Pack |
| TIKI MICROCRETE | Shrinkage Compensating Cementitious Micro Concrete. | 25 Kg Bag |



CORROSION PROTECTION & PIPEWRAP

TIKIDAN's Pipe Wrapping Tape is ideal solution for providing protection to underground and non-exposed metallic pipelines from detrimental effects of corrosion.

| Commercial name | Description | Thickness (mm) | Widths (mm) | Length (m) |
|------------------------------|--|----------------|-----------------------------------|------------|
| TIKIDAN PIPEWRAP | Hot Applied, Plain Finish | 2,3,4 | 1000,500,250, 200,150, 100, 50 | 10 |
| SELF-DAN SP2 PROWRAP | Cold Applied, Self - Adhesive & Geotextile Finish | 2 | 1000,500,250,200, 150, 100, 50 | 10 |
| SELF-DAN PROWRAP | Cold Applied Flexible Self - adhesive with strong flexible film backing. | 1.5 | 1000,500,250, 200,150, 100, 50 | 20 |
| SELF-DAN PLUS PROWRAP | Cold Applied Flexible Self - adhesive with strong cross laminated flexible film backing. | 1.5 | 1000,500,250, 200,150, 100, 50 | 20 |

| Commercial name | Description | Packaging |
|------------------------|-----------------------------------|-----------|
| TIKI CTE | Coal Tar Epoxy Protective Coating | 16 Kg Kit |
| TIKI PROTECT AC | Anti - Carbonation Coating | 20 Ltr |



TECHNICAL SUPPORT

We host an expansive array of standard installation instructions, product data-sheets, technical support statements and other resources on our dedicated portals. These resources are continually updated to ensure that the latest information is always available to our network.

Whether it's a new build project where a new detail or low-risk solution needs to be formulated to accommodate the design, or if it's a refurbishment project where you would like further specification options, our team will produce a full technical report detailing the visit and any subsequent recommendations. As part of our quality management systems, all projects over 100m² must be inspected by our team.

SPECIFICATION

Our dedicated technical support team are on hand to write your project specification. We can engineer your full system specification to include a detailed description of all the TIKIDAN system products described. Our specifications contain detailed installation instructions and product guidance to ensure that the full specification is delivered.





SUSTAINABILITY

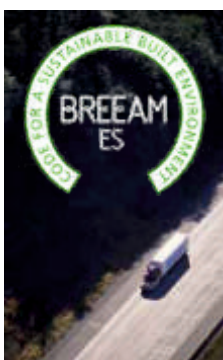
OUR COMMITMENTS TO ENSURING A SUSTAINABLE FUTURE AS WE CARE FOR OUR ENVIRONMENT.

We recognise that every business has an important role to play in the local, regional and sometimes global environment. TIKIDAN prides itself in its approach towards green issues and our environment. We are committed to making continuous improvements by seeking advice from leading experts to reduce our footprint and improve our systems of operation and sourcing.

GREEN BUILDING CERTIFICATIONS

Our Environmental Product Declarations (EPD) contain a lot of useful information. We have a responsibility as a manufacturer to provide detailed environmental data on our products. This includes data on the design, production, construction and maintenance of the system. This has led to the introduction of the European environmental regulation known as Environmental Product Declarations. This is a standardised document, verified by an independent agent and provides quantified and verifiable information about the environmental impact of a product.

The purpose of these tools is to assess the lifecycle environmental impact of products in accordance with the international standard EN ISO 14025. In this sense, an EPD provides objective, transparent, comparable and useful information on the environmental impact of TIKIDAN products through life-cycle analysis (LCA) - from raw material extraction, to manufacturing, to the end of their useful life in buildings.





CERTIFICATIONS

INC. RESEARCH, DEVELOPMENT AND INTERNAL QUALITY CONTROL.

Servicing a global market can be a challenge at times, but by developing our products in accordance with an array of internationally recognised standards and commitments such as the European Harmonised Standard (CE Mark), we are able to continue to deliver the highest standards across the board.

Whilst independent testing and certification, such as the British Board of Agrément's BBA certification scheme, is an important tool to ensure that products (or systems) meet certain material, production and performance standards, we made a commitment to ensure that our products are monitored and tested continuously.

To deliver on this commitment, TIKIDAN has invested in a state-of-the-art in house testing and product development facility at Fontanar (Spain). These test procedures are incorporated in our Quality Management Systems of operation which ensure that each product line is continuously monitored and that batch samples are obtained and tested by our technicians and technical teams.

Our Environmental Product Declarations (EPD) contain a lot of useful information. We have a responsibility as a manufacturer to provide detailed environmental data on our products. This includes data on the design, production, construction and maintenance of the system. This has led to the introduction of the European environmental regulation known as Environmental Product Declarations. This is a standardised document, verified by an independent agent and provides quantified and verifiable information about the environmental impact of a product.



TIKIDAN

Building together

Providing holistic solutions for

- Waterproofing
- Flooring
- Thermal Insulation
- Acoustic Insulation
- Sealants
- Drainage and Protection Systems

TIKI TAR DANOSA (INDIA) PRIVATE LIMITED

CIN: U23209GJ2012PTC071647

Add: Tiki Tar Estate, Village Road, Bhandup (West), Mumbai-400 078, India.

Other Locations: SPAIN | PORTUGAL | FRANCE | UK | MOROCCO | MEXICO

Tel: +91 22 4126 6666

Fax: +91 22 2566 7830



www.tikidan.in

